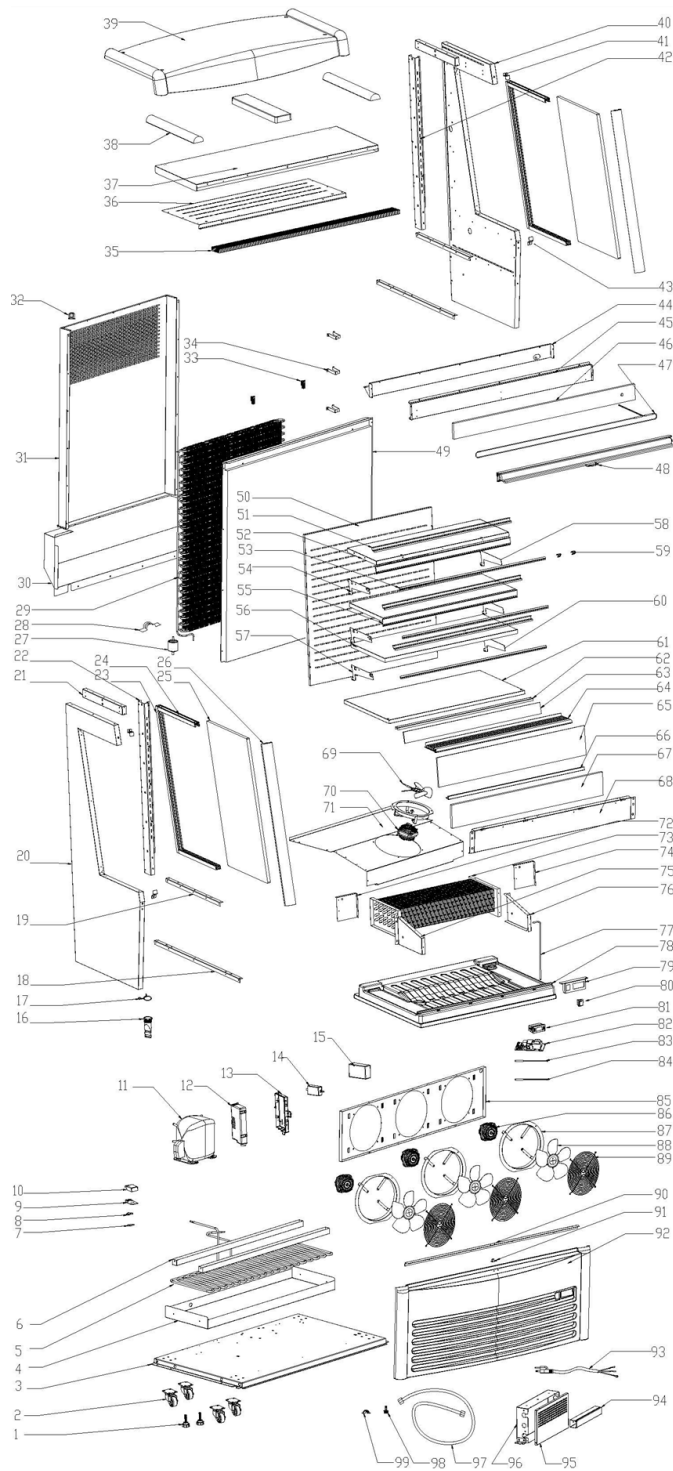


# Parts Breakdown

**Model RS-CN-0490** 48272



# Parts Breakdown

## Model RS-CN-0490 48272

Item No.	Description	Position	Item No.	Description	Position	Item No.	Description	Position
60672	Feet for 48272	1	AL315	Front Pillar of Side Glass for 48272	26	AQ612	Upper Shelf for 48272	52
AL357	Castor for 48272	2	61224	Dry Filter for 48272	27	AQ613	LED Light for 48272	53
AQ592	Base Plate for 48272	3	68302	Pressing Plate of Dry Filter for 48272	28	AL341	Left Support Pillar of Shelf for 48272	54
AQ593	Tray of Heater for 48272	4	AL370	Condenser for 48272	29	AQ614	Price Tag Holder for 48272	55
AQ594	High Pressure Evaporated Copper Tube for 48272	5	AQ597	Base Rear Cover for 48272	30	AQ615	Bottom Shelf for 48272	56
AQ595	Platen of Heater for 48272	6	68423	Condenser Cover for 48272	31	AQ616	Lower Shelf Left Bracket for 48272	57
61246	Wire Clip Holder for 48272	7	60670	PPR Tube Strap for 48272	32	AL342	Right Support Pillar of Shelf for 48272	58
66095	Wire Clip Cover for 48272	8	61222	Stands for Condensor for 48272	33	AD500	Jump Ring of LED for 48272	59
61244	Terminal Box for 48272	9	AQ598	Ventilated Board Connection for 48272	34	AQ617	Lower Shelf Right Bracket for 48272	60
79359	Cover of Terminal Box for 48272	10	AQ599	Honeycomb Panel for 48272	35	AQ618	Bottom Board of Cabinet for 48272	61
AI124	Compressor for 48272	11	AQ600	Inner Top Board for 48272	36	AQ619	Air Inlet Bracket for 48272	62
60594	Cover of Circuit Board Box for 48272	12	AQ601	Top Cover Board for 48272	37	AQ620	Air Inlet Baffle Glass for 48272	63
61167	Circuit Board Box for 48272	13	AQ602	Top Cover Foam for 48272	38	AQ621	Air Inlet Cover for 48272	64
67652	LED Transformer for 48272	14	AQ603	Top Cover Decorating for 48272	39	AQ622	Windshield for 48272	65
AK999	LED Power for 48272	15	AL312	Upper Depressor of Pillar for 48272	41	AQ623	Windshield Strip for 48272	66
AQ596	Drain Pipe for 48272	16	68431	Right Support Pillar of Shelf for 48272	42	AQ624	Evaporator Front Plate PE Cotton for 48272	67
AL376	Circlip for 48272	17	AL310	Bottom Depressor of Pillar for 48272	43	AQ625	Front Board for Evaporator for 48272	68
68407	Connector of Evaporator Base Panel for 48272	18	AQ604	Air Pressure Plate for 48272	44	66351	Fan Blade for 48272	69
68408	Support for Upper Cover of Base for 48272	19	AQ605	Board Ahead Night Curtain for 48272	45	AG596	Evaporator Fan Motor 110V for 48272	70
AL311	Foam of Left Side Board for 48272	20, 40	AQ606	Night Curtain Front Panel PE Cotton for 48272	46	AQ626	Evaporator Cover for 48272	71
AL340	Left Support of Indoor Roof for 48272	21	AQ607	Heater Line for 48272	47	AQ627	Left Wind Screen of Evaporator for 48272	72
68411	Left Support Pillar of Shelf for 48272	22	AQ608	Night Curtain for 48272	48	AQ628	Evaporator for 48272	73
AL313	Back Strip for Side Glass for 48272	23	AQ609	Foam of Back Cover for 48272	49	AQ629	Right Wind Screen of Evaporator for 48272	74
AL314	Top/Bottom Strip for Side Glass for 48272	24	AQ610	Ventilated Board for 48272	50	71521	Left Board of Evaporator Cover for 48272	75
68414	Side Glass for 48272	25	AQ611	Shelf Accessories for 48272	51	61180	Right Board of Evaporator Cover for 48272	76

# Parts Breakdown

## Model RS-CN-0490 48272

Item No.	Description	Position	Item No.	Description	Position	Item No.	Description	Position
AQ630	Connection Pipe for 48272	77	AQ632	Holder for Condenser Motor for 48272	85	AC057	Power Cord for 48272	93
AQ631	Base Foam of Evaporator for 48272	78	AL374	Evaporator Fan Motor for 48272	86	60590	PVC Trucking for 48272	94
AL327	Holder for Digital Display for 48272	79	60932	Fan Guard for 48272	87	67642	Cover of Terminal Box for 48272	95
71514	Switch (Green) for 48272	80	60933	Fan Blade for 48272	88	67643	Terminal Box for 48272	96
67648	Temperature Display for 48272	81	AD519	Flat Net Cover for 48272	89	60668	Drain Pipe for 48272	97
AF546	Main Circuit Board for 48272	82	AQ633	Retaining Plate for Bottom Front Panel for 48272	90	68398	Copper Connection for 48272	98
60666	Temperature Probe for 48272	83	60651	Curtain Hook for 48272	91	60669	Pressing Plate of Dry Filter for 48272	99
68333	Over-Heating Sensor for 48272	84	AQ634	Bottom Front Panel for 48272	92			